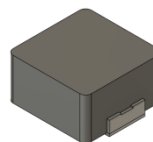


■一体成型功率电感器

Integrated power inductor



◆特征

Feature

- * 高性能。
High-performance.
- * 高频应用。
High frequency applications.
- * 低损耗。
Low power loss.
- * 符合 RoHS 和无卤素要求。
Compliance with RoHS and Halogen Free.
- * 工作温度范围(包括自身发热):(-55~+125)°C。
Operating Temperature Range(Including self-heating):(-55~+125)°C.

◆应用

Application

- * 本承认书中涉及产品推荐用于电脑、通讯设备、工业设备等。
This admission letter involves product recommendations for computers, communication equipment, industrial equipment, etc.

◆型号表示法

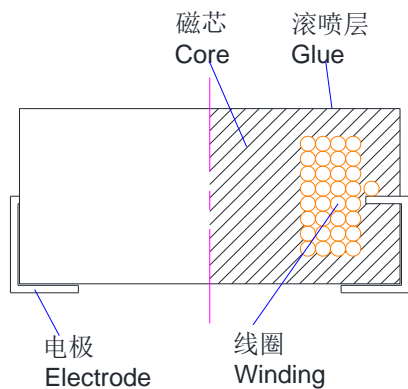
Part Number

HMA	0530	-	1R0	M	T	2	W0
①	②	③	④	⑤	⑥	⑦	

①		②		③	
产品代号 Product Code		尺寸代码 Dimension code		电感量标称值 Inductance	
HMA	合金粉一体成型电感 Alloy-Powder Molded Inductor	长度、宽度、高度 Length, width, height		1R0	1.0μH
HMH	羰基铁粉一体成型电感 Carbonyl-Iron Powder Molded Inductor			100	10μH
				101	100μH
④		⑤		⑥	
电感量公差代码 Tolerance code		包装代码 Packing code		温度代码 Temperature code	
K	±10%	T	编带卷盘 Tape & reel	2 125℃	
M	±20%				
N	±30%				
		⑦			
		内部代码 Internal code			
		W0	内部代码		

◆产品结构

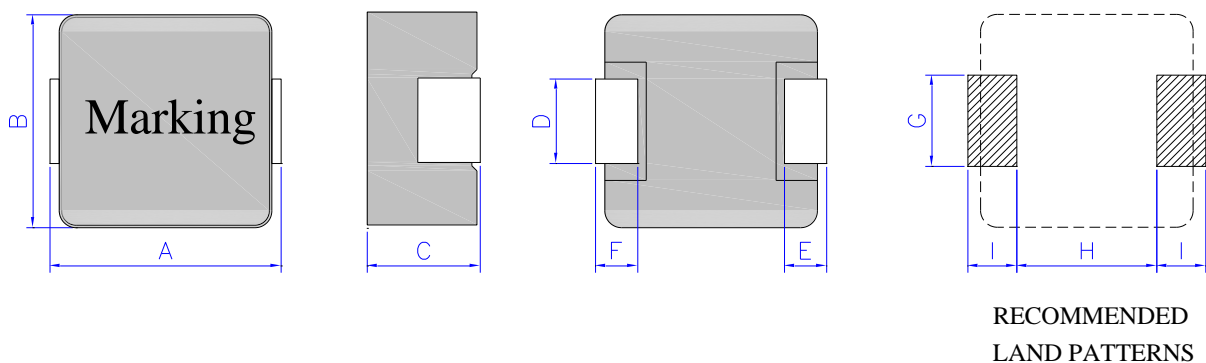
Product Structure



No.	部位 Component	材料 Material	备注
①	磁芯 Core	金属粉末 Metal powder	HMA-2W0 Series HMH-2W0 Series
②	线圈 Winding	漆包线 Enamelled Wire	HMA-2W0 Series HMH-2W0 Series
③	电极片 Base	金属材料 Metal material	HMA-2W0 Series HMH-2W0 Series
④	滚喷层 Glue	树脂类胶体 Resin colloid	HMH-2W0 Series

◆产品尺寸与焊盘图

Product Dimensions and Land Pattern



顶部印字: 1.0 μ H→1R0, 10 μ H→100, 100 μ H→101, 1000 μ H→102

Marking: 1.0 μ H→1R0, 10 μ H→100, 100 μ H→101, 1000 μ H→102

◆HMA-2W0 系列尺寸

HMA-2W0 Series Dimensions

Part No.	A(mm)	B(mm)	C(mm)	D(mm)	E(mm)	F(mm)	G(mm) typical	H(mm) typical	I(mm) typical
0420	4.4±0.35	4.2±0.25	1.8±0.2	2.0±0.3	0.8±0.3	0.8±0.3	2.5	2.2	1.5
0530	5.35±0.4	5.1±0.3	2.8±0.2	2.2±0.3	1.2±0.2	1.2±0.2	2.5	2.2	1.9
0630	7.0±0.3	6.6±0.2	2.8±0.2	3.0±0.3	1.6±0.3	1.6±0.3	3.5	3.7	2.35
0650	7.0±0.3	6.6±0.2	4.8±0.2	3.0±0.3	1.6±0.3	1.6±0.3	3.5	3.7	2.35
0840	8.8±0.4	8.2±0.3	3.8±0.2	5.0±0.3	1.4±0.3	1.4±0.3	5.5	4.0	2.75
1050	11.0±0.5	10.0±0.3	4.8±0.2	3.0±0.5	2.0±0.5	2.0±0.5	4.1	5.4	4.1
1250	13.45±0.35	12.6±0.3	4.8±0.2	See remarks	2.0±0.5	2.0±0.5	5.5	8.0	3.25
1265	13.45±0.35	12.6±0.3	6.1±0.4	5.0±0.3	2.0±0.5	2.0±0.5	5.5	8.0	3.25
1770	17.15±0.35	16.9±0.25	6.6±0.4	12.0±0.3	2.5±0.5	2.5±0.5	12.8	11.2	3.5

注：G H I 指推荐的 PCB 焊盘尺寸

Note: G H I refers to the recommended PCB pad size

Part No	D(mm)	Dimensions
1250	3.85±0.5	R22/R36/R50/R68/R82/1R0/1R5/2R2
	5.0±0.3	3R3/4R7/6R8/8R2/100/150/220/330/470/680

◆HMH-2W0 系列尺寸

HMH-2W0 Series Dimensions

Part No.	A(mm)	B(mm)	C(mm)	D(mm)	E(mm)	F(mm)	G(mm) typical	H(mm) typical	I(mm) typical
0320	3.3±0.4	3.2±0.3	1.8±0.2	1.2±0.2	0.7±0.2	0.7±0.2	1.45	1.9	1.1
0420	4.35±0.4	4.15±0.3	1.8±0.2	2.0±0.3	0.8±0.3	0.8±0.3	2.5	2.2	1.5
0520	5.6±0.4	5.1±0.3	1.8±0.2	2.0±0.3	1.2±0.2	1.2±0.2	2.5	2.2	1.9
0530	5.6±0.4	5.1±0.3	2.8±0.2	2.0±0.3	1.2±0.2	1.2±0.2	2.5	2.2	1.9
0618	7.2±0.4	6.6±0.3	1.6±0.2	3.0±0.3	1.6±0.3	1.6±0.3	3.5	3.7	2.35
0624	7.2±0.4	6.6±0.3	2.2±0.2	3.0±0.3	1.6±0.3	1.6±0.3	3.5	3.7	2.35
0630	7.2±0.4	6.6±0.3	2.8±0.2	3.0±0.3	1.6±0.3	1.6±0.3	3.5	3.7	2.35
0650	7.2±0.4	6.6±0.3	4.8±0.2	3.0±0.3	1.6±0.3	1.6±0.3	3.5	3.7	2.35
1030	11.0±0.5	10.0±0.3	2.8±0.2	3.0±0.5	2.0±0.5	2.0±0.5	4.1	5.4	4.1
1040	11.0±0.5	10.0±0.3	3.8±0.2	3.0±0.5	2.0±0.5	2.0±0.5	4.1	5.4	4.1
1235	13.5±0.5	12.6±0.3	3.3±0.2	See remark	2.0±0.5	2.0±0.5	4.1	5.4	4.1
1250	13.5±0.5	12.6±0.3	4.8±0.2	See remark	2.0±0.5	2.0±0.5	4.1	5.4	4.1
1260	13.5±0.5	12.6±0.3	5.8±0.2	See remark	2.0±0.5	2.0±0.5	4.1	5.4	4.1
1265	13.5±0.5	12.6±0.3	6.3±0.2	See remark	2.0±0.5	2.0±0.5	4.1	5.4	4.1
1770	17.5±0.5	17.0±0.3	6.8±0.2	12±0.3	2.5±0.5	2.5±0.5	12.8	11.2	3.5

注：G H I 指推荐的 PCB 焊盘尺寸

Note: G H I refers to the recommended PCB pad size

Part No	D	Dimensions
1235	3.85±0.5	R47/R68/R82
	4.7±0.5	1R0/1R5/2R2/3R3/4R7/5R6/6R8/8R2/100/150/220/330/470

Part No	D	Dimensions
1250	3.85±0.5	R33/R47/R56/R68/R82/1R0/1R5
	4.7±0.5	2R2/3R3/4R7/6R8/8R2/100/150/220/330

Part No	D	Dimensions
1260	3.85±0.5	R47/R68/1R0/1R5
	4.7±0.5	2R2/3R3/4R7/6R8/8R2/100/150/220/330/470/680/820/101/121/151

Part No	D	Dimensions
1265	3.85±0.5	R47/R68/1R0/1R5
	4.7±0.5	2R2/3R3/4R7/6R8/8R2/100/150/220/330/470/680

◆电性能参数

Electrical Characteristics

项目 Item	测试条件 Test condition	测试仪器 Test equipment
电感量 Inductance	100KHz/1V	HP4263B or equivalent
直流电阻 RDC	直流电 direct-current	HP4263B or equivalent
饱和电流 Isat	100KHz/1V	Microtest 6379 & 6220 or equivalent
温升电流 Irms	ambient temperature 20°C	Microtest 6379 & 6220 or equivalent

Isat: 指使电感量比初始值下降约 30%的电流值;

The DC current at which the inductance drops approximate 30% from its value without current;

Irms: 指使电感器表面温度上升 40°C的电流值。

The DC current is inductor surface temperature to rise by 40°C

◆HMA-2W0 Series

HMA0420-2W0 Series

型号 Part No.	电感量 Ls(μH)		直流电阻 RDC (mΩ)		饱和电流 Isat (A)		温升电流 Irms (A)	
	Nom.	Tol.	Max.	Typ.	Max.	Typ.	Max.	Typ.
HMA0420-R10MT2W0	0.10	±20%	4.0	3.3	18.8	22	11.1	13.0
HMA0420-R22MT2W0	0.22	±20%	6.6	5.5	10.7	12.5	8.1	9.5
HMA0420-R33MT2W0	0.33	±20%	11.0	9.2	10.3	12	8.6	10.0
HMA0420-R47MT2W0	0.47	±20%	14.0	11.7	8.1	9.5	6.4	7.5
HMA0420-R56MT2W0	0.56	±20%	16.0	13.3	7.7	9.0	6.0	7.0
HMA0420-R68MT2W0	0.68	±20%	18.0	15.0	6.9	8.0	6.0	7.0
HMA0420-1R0MT2W0	1.0	±20%	27.0	22.5	6.0	7.0	5.1	6.0
HMA0420-1R2MT2W0	1.2	±20%	27.0	22.5	5.6	6.5	5.1	6.0
HMA0420-1R5MT2W0	1.5	±20%	46.0	38.3	4.7	5.5	4.3	5.0
HMA0420-2R2MT2W0	2.2	±20%	58.0	48.3	4.3	5.0	3.9	4.5
HMA0420-3R3MT2W0	3.3	±20%	87.0	72.5	3.0	3.5	2.8	3.3
HMA0420-4R7MT2W0	4.7	±20%	105.0	87.5	2.6	3.0	2.4	2.8
HMA0420-6R8MT2W0	6.8	±20%	175.0	146.0	2.1	2.5	2.1	2.4
HMA0420-100MT2W0	10.0	±20%	282.0	235.0	1.7	2.0	1.4	1.6

额定工作电压: DC 30V

Rated working voltage: DC 30V

HMA0530-2W0 Series

型号 Part No.	电感量 Ls(μH)		直流电阻 RDC (mΩ)		饱和电流 Isat (A)		温升电流 Irms (A)	
	Nom.	Tol.	Max.	Typ.	Max.	Typ.	Max.	Typ.
HMA0530-R10MT2W0	0.10	±20%	3.0	2.5	25.7	30.0	21.4	25.0
HMA0530-R20MT2W0	0.20	±20%	3.9	3.25	17.1	20.0	12.0	14.0
HMA0530-R33MT2W0	0.33	±20%	5.5	4.6	15.4	18.0	12.0	14.0
HMA0530-R47MT2W0	0.47	±20%	8.5	7.1	12.8	15.0	9.4	11.0
HMA0530-R68MT2W0	0.68	±20%	12.0	10.0	9.8	11.5	7.7	9.0
HMA0530-1R0MT2W0	1.0	±20%	14.0	11.6	7.5	10.0	7.0	8.5
HMA0530-1R2MT2W0	1.2	±20%	16.0	13.3	8.1	9.5	7.0	8.5
HMA0530-1R5MT2W0	1.5	±20%	25.0	25.0	7.7	7.7	7.0	8.2
HMA0530-2R2MT2W0	2.2	±20%	29.0	24.2	6.0	7.0	6.0	7.0
HMA0530-3R3MT2W0	3.3	±20%	38.0	31.6	5.1	6.0	4.7	5.5
HMA0530-4R7MT2W0	4.7	±20%	60.0	50.0	3.9	4.6	3.8	4.5
HMA0530-6R8MT2W0	6.8	±20%	90.0	75.0	3.1	3.6	3.0	3.5
HMA0530-100MT2W0	10.0	±20%	125.0	104.0	3.0	3.5	2.7	3.2

额定工作电压：DC 30V

Rated working voltage: DC 30V

HMA0630-2W0 Series

型号 Part No.	电感量 Ls(μH)		直流电阻 RDC (mΩ)		饱和电流 Isat (A)		温升电流 Irms (A)	
	Nom.	Tol.	Max.	Typ.	Max.	Typ.	Max.	Typ.
HMA0630-R15MT2W0	0.15	±20%	2.4	2.0	35.0	41.0	25.0	30.0
HMA0630-R22MT2W0	0.22	±20%	3.0	2.5	32.0	34.0	21.0	24.0
HMA0630-R33MT2W0	0.33	±20%	3.5	3.0	22.0	25.0	20.0	21.0
HMA0630-R47MT2W0	0.47	±20%	4.1	3.5	18.0	20.0	16.0	18.0
HMA0630-R56MT2W0	0.56	±20%	4.5	3.8	16.0	18.0	15.0	16.5
HMA0630-R68MT2W0	0.68	±20%	5.3	4.5	15.0	17.0	14.5	16.0
HMA0630-R82MT2W0	0.82	±20%	6.0	5.0	14.0	16.0	13.0	14.0
HMA0630-1R0MT2W0	1.0	±20%	7.4	6.2	13.5	15.0	11.2	12.0
HMA0630-1R5MT2W0	1.5	±20%	12.1	10.1	12.0	14.0	9.5	12.0
HMA0630-2R2MT2W0	2.2	±20%	15.0	12.5	10.5	12.0	8.5	9.5
HMA0630-2R7MT2W0	2.7	±20%	20.0	16.8	9.0	10.0	8.2	8.8
HMA0630-3R3MT2W0	3.3	±20%	22.0	18.5	8.7	9.5	8.0	8.5
HMA0630-4R7MT2W0	4.7	±20%	33.0	27.5	7.5	9.0	5.5	6.0
HMA0630-5R6MT2W0	5.6	±20%	42.0	35.0	5.5	6.5	5.0	5.5
HMA0630-6R8MT2W0	6.8	±20%	48.0	40.0	5.2	6.0	4.5	5.0
HMA0630-8R2MT2W0	8.2	±20%	60.0	50.0	5.0	5.5	4.0	5.0
HMA0630-100MT2W0	10.0	±20%	68.0	57.0	4.9	5.5	3.8	4.5
HMA0630-150MT2W0	15.0	±20%	113.0	95.0	3.5	4.0	2.6	3.0
HMA0630-220MT2W0	22.0	±20%	170.0	145.0	2.5	3.0	2.2	2.5
HMA0630-330MT2W0	33.0	±20%	270.0	225.0	2.1	2.5	1.8	2.0
HMA0630-470MT2W0	47.0	±20%	385.0	325.0	1.8	2.0	1.3	1.5

额定工作电压：DC 50V

Rated working voltage: DC 50V

HMA0650-2W0 Series

型号 Part No.	电感量 Ls(μH)		直流电阻 RDC (mΩ)		饱和电流 Isat (A)		温升电流 Irms (A)	
	Nom.	Tol.	Max.	Typ.	Max.	Typ.	Max.	Typ.
HMA0650-R47MT2W0	0.47	±20%	3.9	3.3	18.0	21.0	17.1	20.0
HMA0650-R68MT2W0	0.68	±20%	4.5	3.8	18.0	21.0	14.1	16.5
HMA0650-1R0MT2W0	1.0	±20%	6.6	5.5	13.7	16.0	10.3	12.0
HMA0650-1R5MT2W0	1.5	±20%	10.0	8.3	11.1	13.0	8.1	9.5
HMA0650-2R2MT2W0	2.2	±20%	12.5	10.4	9.4	11.0	7.7	9.0
HMA0650-3R3MT2W0	3.3	±20%	22.0	18.3	8.6	10.0	7.2	8.5
HMA0650-4R7MT2W0	4.7	±20%	29.0	24.2	6.9	8.0	5.1	6.0
HMA0650-6R8MT2W0	6.8	±20%	41.0	34.2	5.4	6.3	5.0	5.8
HMA0650-8R2MT2W0	8.2	±20%	48.0	40.0	4.7	5.5	4.7	5.5
HMA0650-100MT2W0	10.0	±20%	60.0	50.0	4.5	5.3	3.8	4.5
HMA0650-150MT2W0	15.0	±20%	90.0	75.0	3.4	4.0	2.6	3.1
HMA0650-220MT2W0	22.0	±20%	140.0	116.0	3.0	3.5	2.2	2.6
HMA0650-330MT2W0	33.0	±20%	190.0	158.0	2.5	3.0	2.0	2.3
HMA0650-470MT2W0	47.0	±20%	230.0	192.0	2.2	2.6	1.7	2.0

额定工作电压：DC 50V

Rated working voltage: DC 50V

HMA0840-2W0 Series

型号 Part No.	电感量 Ls(μH)		直流电阻 RDC (mΩ)		饱和电流 Isat (A)		温升电流 Irms (A)	
	Nom.	Tol.	Max.	Typ.	Max.	Typ.	Max.	Typ.
HMA0840-R22MT2W0	0.22	±20%	1.8	1.5	55.0	60.0	30.0	36.0
HMA0840-R33MT2W0	0.33	±20%	2.4	2.0	40.0	45.0	25.0	30.0
HMA0840-R47MT2W0	0.47	±20%	2.8	2.3	36.0	42.0	25.0	28.0
HMA0840-R56MT2W0	0.56	±20%	3.2	2.6	23.0	26.0	22.0	24.0
HMA0840-R68MT2W0	0.68	±20%	3.8	3.1	22.0	24.0	21.0	23.0
HMA0840-R82MT2W0	0.82	±20%	4.4	3.6	19.0	21.0	19.0	21.0
HMA0840-1R0MT2W0	1.0	±20%	4.62	3.8	17.0	19.0	17.0	19.0
HMA0840-1R5MT2W0	1.5	±20%	7.6	6.3	15.0	17.0	15.0	17.0
HMA0840-1R8MT2W0	1.8	±20%	11.0	9.1	13.5	15.0	12.5	15.0
HMA0840-2R2MT2W0	2.2	±20%	11.4	9.5	12.0	14.0	12.0	14.0
HMA0840-3R3MT2W0	3.3	±20%	15.0	12.5	11.0	12.5	10.0	12.0
HMA0840-4R7MT2W0	4.7	±20%	26.5	22.0	10.5	11.5	8.5	9.5
HMA0840-5R6MT2W0	5.6	±20%	30.0	25.0	10.0	11.0	8.0	9.0
HMA0840-6R8MT2W0	6.8	±20%	36.8	30.6	8.0	9.0	7.0	8.0
HMA0840-8R2MT2W0	8.2	±20%	46.0	38.3	7.7	8.7	6.0	7.0
HMA0840-100MT2W0	10.0	±20%	59.0	49.1	7.0	8.0	5.5	6.5

型号 Part No.	电感量 Ls(μH)		直流电阻 RDC (mΩ)		饱和电流 Isat (A)		温升电流 Irms (A)	
	Nom.	Tol.	Max.	Typ.	Max.	Typ.	Max.	Typ.
HMA0840-150MT2W0	15.0	±20%	71.0	59.1	4.9	5.5	4.8	5.4
HMA0840-220MT2W0	22.0	±20%	113.0	94.1	4.5	5.0	4.2	4.8
HMA0840-330MT2W0	33.0	±20%	156.0	130	3.3	3.5	3.0	3.5
HMA0840-470MT2W0	47.0	±20%	225.0	187.5	2.9	3.1	2.5	2.9

额定工作电压：DC 50V

Rated working voltage: DC 50V

HMA1050-2W0 Series

型号 Part No.	电感量 Ls(μH)		直流电阻 RDC (mΩ)		饱和电流 Isat (A)		温升电流 Irms (A)	
	Nom.	Tol.	Max.	Typ.	Max.	Typ.	Max.	Typ.
HMA1050-R22MT2W0	0.22	±20%	0.8	0.7	55.7	65.0	31.7	37.0
HMA1050-1R0MT2W0	1.0	±20%	3.0	2.5	25.7	30.0	19.7	23.0
HMA1050-1R5MT2W0	1.5	±20%	3.8	3.2	21.4	25.0	18.0	21.0
HMA1050-2R2MT2W0	2.2	±20%	6.0	5.0	16.3	19.0	12.8	15.0
HMA1050-3R3MT2W0	3.3	±20%	10.0	8.3	13.7	16.0	11.1	13.0
HMA1050-4R7MT2W0	4.7	±20%	14.0	11.6	12.8	15.0	9.4	11.0
HMA1050-5R6MT2W0	5.6	±20%	17.0	14.2	12.0	14.0	8.1	9.5
HMA1050-6R8MT2W0	6.8	±20%	18.5	15.4	12.0	14.0	7.7	9.0
HMA1050-100MT2W0	10.0	±20%	28.0	23.3	8.5	10.0	6.8	8.0
HMA1050-150MT2W0	15.0	±20%	42.0	35.0	6.4	7.5	5.6	6.5
HMA1050-220MT2W0	22.0	±20%	50.0	41.6	5.1	6.0	4.7	5.5
HMA1050-330MT2W0	33.0	±20%	86.0	71.6	4.4	5.2	4.1	4.8
HMA1050-470MT2W0	47.0	±20%	127.0	105.0	3.8	4.5	3.1	3.7
HMA1050-101MT2W0	100.0	±20%	290.0	241.0	2.3	2.8	1.8	2.1

额定工作电压：DC 50V

Rated working voltage: DC 50V

HMA1250-2W0 Series

型号 Part No.	电感量 Ls(μH)		直流电阻 RDC (mΩ)		饱和电流 Isat (A)		温升电流 Irms (A)	
	Nom.	Tol.	Max.	Typ.	Max.	Typ.	Max.	Typ.
HMA1250-R22MT2W0	0.22	±20%	0.7	0.6	64.3	75.0	42.8	50.0
HMA1250-R36MT2W0	0.36	±20%	0.85	0.7	42.8	50.0	36.0	42.0
HMA1250-R50MT2W0	0.50	±20%	1.15	1.0	41.1	48.0	32.6	38.0
HMA1250-R68MT2W0	0.68	±20%	1.55	1.3	39.4	46.0	28.3	33.0
HMA1250-R82MT2W0	0.82	±20%	1.67	1.4	33.4	39.0	25.7	30.0
HMA1250-1R0MT2W0	1.0	±20%	2.2	1.8	30.0	35.0	22.2	26.0
HMA1250-1R5MT2W0	1.5	±20%	3.2	2.6	28.2	33.0	19.7	23.0
HMA1250-2R2MT2W0	2.2	±20%	5.0	4.2	20.6	24.0	12.8	15.0
HMA1250-3R3MT2W0	3.3	±20%	7.0	5.8	18.8	22.0	12.0	14.0

型号 Part No.	电感量 Ls(μH)		直流电阻 RDC (mΩ)		饱和电流 Isat (A)		温升电流 Irms (A)	
	Nom.	Tol.	Max.	Typ.	Max.	Typ.	Max.	Typ.
HMA1250-4R7MT2W0	4.7	±20%	9.0	7.5	17.1	20.0	11.1	13.0
HMA1250-6R8MT2W0	6.8	±20%	18.0	15.0	13.7	16.0	10.3	12.0
HMA1250-8R2MT2W0	8.2	±20%	20.0	16.6	11.1	13.0	8.1	9.5
HMA1250-100MT2W0	10.0	±20%	22.0	18.3	10.3	12.0	7.7	9.0
HMA1250-150MT2W0	15.0	±20%	30.0	25.0	8.6	10.0	6.8	8.0
HMA1250-220MT2W0	22.0	±20%	58.0	48.3	5.6	6.5	3.8	4.5
HMA1250-330MT2W0	33.0	±20%	84.0	70.0	5.1	6.0	3.0	3.5
HMA1250-470MT2W0	47.0	±20%	130.0	108.0	4.3	5.0	2.5	3.0
HMA1250-680MT2W0	68.0	±20%	140.0	116.0	3.8	4.5	2.4	2.8

额定工作电压：DC 50V

Rated working voltage: DC 50V

HMA1265-2W0 Series

型号 Part No.	电感量 Ls(μH)		直流电阻 RDC (mΩ)		饱和电流 Isat (A)		温升电流 Irms (A)	
	Nom.	Tol.	Max.	Typ.	Max.	Typ.	Max.	Typ.
HMA1265-4R7MT2W0	4.7	±20%	8.5	7.1	20.6	24.0	13.7	16.0
HMA1265-5R6MT2W0	5.6	±20%	10.5	8.8	19.3	22.5	12.0	14.0
HMA1265-6R8MT2W0	6.8	±20%	12.0	10.0	16.3	19.0	11.1	13.0
HMA1265-8R2MT2W0	8.2	±20%	14.0	11.7	13.7	16.0	10.3	12.0
HMA1265-100MT2W0	10.0	±20%	16.5	13.8	12.9	15.0	9.4	11.0
HMA1265-150MT2W0	15.0	±20%	26.0	21.7	9.4	11.0	8.1	9.5
HMA1265-220MT2W0	22.0	±20%	36.0	30.0	7.7	9.0	6.9	8.0
HMA1265-330MT2W0	33.0	±20%	65.0	54.2	6.9	8.0	5.6	6.5
HMA1265-470MT2W0	47.0	±20%	70.0	58.3	5.8	6.8	4.7	5.5
HMA1265-680MT2W0	68.0	±20%	120.0	100.0	4.5	5.2	4.1	4.8
HMA1265-820MT2W0	82.0	±20%	135.0	112.5	3.9	4.5	3.4	4.0
HMA1265-101MT2W0	100.0	±20%	170.0	141.7	3.4	4.0	3.0	3.5

额定工作电压：DC 50V

Rated working voltage: DC 50V

HMA1770-2W0 Series

型号 Part No.	电感量 Ls(μH)		直流电阻 RDC (mΩ)		饱和电流 Isat (A)		温升电流 Irms (A)	
	Nom.	Tol.	Max.	Typ.	Max.	Typ.	Max.	Typ.
HMA1770-1R5M2W0	1.5	±20%	2.1	1.8	34.3	40.0	28.3	33.0
HMA1770-2R2M2W0	2.2	±20%	2.5	2.1	29.1	34.0	24.9	29.0
HMA1770-3R3M2W0	3.3	±20%	4.0	3.3	25.7	30.0	20.6	24.0
HMA1770-4R7M2W0	4.7	±20%	4.8	4.0	20.6	24.0	18.0	21.0
HMA1770-6R8M2W0	6.8	±20%	7.5	6.3	18.9	22.0	14.6	17.0
HMA1770-8R2M2W0	8.2	±20%	8.7	7.3	17.1	20.0	11.1	13.0

型号 Part No.	电感量 Ls(μH)		直流电阻 RDC (mΩ)		饱和电流 Isat (A)		温升电流 Irms (A)	
	Nom.	Tol.	Max.	Typ.	Max.	Typ.	Max.	Typ.
HMA1770-100M2W0	10	±20%	9.9	8.3	16.3	19.0	10.3	12.0
HMA1770-150M2W0	15	±20%	17.0	14.2	12.4	14.5	9.4	11.0
HMA1770-220M2W0	22	±20%	23.0	19.2	9.9	11.5	7.3	8.5
HMA1770-330M2W0	33	±20%	37.0	30.8	8.6	10.0	6.9	8.0
HMA1770-470M2W0	47	±20%	47.0	39.2	6.4	7.5	5.1	6.0
HMA1770-680M2W0	68	±20%	85.0	70.8	5.6	6.5	4.5	5.2
HMA1770-101M2W0	100	±20%	130.0	108.3	4.3	5.0	3.2	3.7

额定工作电压：DC 50V

Rated working voltage: DC 50V

◆HMH-2W0 Series

HMH0320-2W0 Series

型号 Part No.	电感量 Ls(μH)		直流电阻 RDC (mΩ)		饱和电流 Isat (A)		温升电流 Irms (A)	
	Nom.	Tol.	Max.	Typ.	Max.	Typ.	Max.	Typ.
HMH0320-R33MT2W0	0.33	±20%	21.0	17.5	8.5	10.0	6.8	8.0
HMH0320-R47MT2W0	0.47	±20%	23.0	19.1	7.7	9.0	6.0	7.0
HMH0320-R68MT2W0	0.68	±20%	29.0	24.1	6.0	7.0	4.7	5.5
HMH0320-1R0MT2W0	1.0	±20%	38.0	31.1	6.8	5.0	3.4	4.0
HMH0320-1R5MT2W0	1.5	±20%	50.0	41.6	3.4	4.0	3.2	3.8
HMH0320-2R2MT2W0	2.2	±20%	75.0	62.5	3.1	3.7	3.0	3.5
HMH0320-3R3MT2W0	3.3	±20%	145.0	120.8	3.0	3.5	2.5	3.0
HMH0320-4R7MT2W0	4.7	±20%	200.0	166.6	2.5	3.0	2.2	2.6
HMH0320-5R6MT2W0	5.6	±20%	238.0	198.3	2.2	2.6	2.2	2.2
HMH0320-6R8MT2W0	6.8	±20%	300.0	250.0	1.8	2.2	1.6	1.9
HMH0320-8R2MT2W0	8.2	±20%	390.0	325.0	1.6	1.9	1.3	1.6
HMH0320-100MT2W0	10.0	±20%	422.0	351.6	1.3	1.6	1.2	1.4

额定工作电压：DC 50V

Rated working voltage: DC 50V

HMH0420-2W0 Series

型号 Part No.	电感量 Ls(μH)		直流电阻 RDC (mΩ)		饱和电流 Isat (A)		温升电流 Irms (A)	
	Nom.	Tol.	Max.	Typ.	Max.	Typ.	Max.	Typ.
HMH0420-R33MT2W0	0.33	±20%	8.6	7.1	15.4	18.0	8.5	10.0
HMH0420-R47MT2W0	0.47	±20%	14.0	11.6	10.2	12.0	6.8	8.0
HMH0420-R68MT2W0	0.68	±20%	19.0	15.8	8.5	10.0	6.0	7.0
HMH0420-1R0MT2W0	1.0	±20%	27.0	22.5	7.2	8.5	4.2	5.0
HMH0420-1R5MT2W0	1.5	±20%	42.0	35.0	6.0	7.0	3.8	4.5
HMH0420-2R2MT2W0	2.2	±20%	61.0	50.8	5.1	6.0	3.4	4.0

型号 Part No.	电感量 Ls(μH)		直流电阻 RDC (mΩ)		饱和电流 Isat (A)		温升电流 Irms (A)	
	Nom.	Tol.	Max.	Typ.	Max.	Typ.	Max.	Typ.
HMH0420-3R3MT2W0	3.3	±20%	76.0	63.3	3.4	4.0	3.0	3.5
HMH0420-4R7MT2W0	4.7	±20%	105.0	87.5	3.0	3.5	2.2	2.6
HMH0420-6R8MT2W0	6.8	±20%	172.0	143.3	2.4	2.8	1.8	2.1
HMH0420-100MT2W0	10.0	±20%	243.0	202.5	1.9	2.3	1.5	1.8

额定工作电压：DC 50V

Rated working voltage: DC 50V

HMH0520-2W0 Series

型号 Part No.	电感量 Ls(μH)		直流电阻 RDC (mΩ)		饱和电流 Isat (A)		温升电流 Irms (A)	
	Nom.	Tol.	Max.	Typ.	Max.	Typ.	Max.	Typ.
HMH0520-R10MT2W0	0.10	±20%	4.0	3.3	38.6	45.0	15.4	18.0
HMH0520-R15MT2W0	0.15	±20%	4.6	3.8	23.1	27.0	13.7	16.0
HMH0520-R22MT2W0	0.22	±20%	5.5	4.5	21.4	25.0	12.8	15.0
HMH0520-R33MT2W0	0.33	±20%	7.3	6.0	18.2	21.3	10.2	12.0
HMH0520-R47MT2W0	0.47	±20%	8.6	7.1	15.4	18.0	9.8	11.5
HMH0520-R68MT2W0	0.68	±20%	12.4	10.3	10.9	12.8	8.5	10.0
HMH0520-1R0MT2W0	1.0	±20%	20.0	16.6	11.7	13.7	6.0	7.0
HMH0520-1R5MT2W0	1.5	±20%	30.5	25.4	8.4	9.8	4.7	5.5
HMH0520-2R2MT2W0	2.2	±20%	50.0	41.6	7.7	9.0	3.6	4.2
HMH0520-3R3MT2W0	3.3	±20%	76.0	63.3	6.2	7.3	2.8	3.3
HMH0520-4R7MT2W0	4.7	±20%	116.0	96.6	4.3	5.0	2.4	2.8
HMH0520-6R8MT2W0	6.8	±20%	150.0	125.0	3.2	3.8	2.0	2.4
HMH0520-8R2MT2W0	8.2	±20%	171.0	142.5	3.0	3.5	1.9	2.3
HMH0520-100MT2W0	10.0	±20%	199.0	165.8	2.9	3.4	1.9	2.3
HMH0520-150MT2W0	15.0	±20%	270.0	225.0	2.4	2.8	1.6	1.9
HMH0520-220MT2W0	22.0	±20%	390.0	325.0	1.5	1.8	1.2	1.5

额定工作电压：DC 50V

Rated working voltage: DC 50V

HMH0530-2W0 Series

型号 Part No.	电感量 Ls(μH)		直流电阻 RDC (mΩ)		饱和电流 Isat (A)		温升电流 Irms (A)	
	Nom.	Tol.	Max.	Typ.	Max.	Typ.	Max.	Typ.
HMH0530-R22MT2W0	0.22	±20%	4.4	3.6	18.0	21.0	13.2	15.5
HMH0530-R33MT2W0	0.33	±20%	5.0	4.1	15.4	18.0	12.0	14.0
HMH0530-R47MT2W0	0.47	±20%	7.4	6.1	13.7	16.0	10.2	12.0
HMH0530-R68MT2W0	0.68	±20%	12.0	10.0	12.0	14.0	7.2	8.5
HMH0530-R82MT2W0	0.82	±20%	13.0	10.8	10.7	12.5	6.8	8.0
HMH0530-1R0MT2W0	1.0	±20%	14.0	11.6	9.4	11.0	6.0	7.0
HMH0530-1R5MT2W0	1.5	±20%	25.0	20.8	8.5	10.0	5.1	6.0

型号 Part No.	电感量 Ls(μH)		直流电阻 RDC (mΩ)		饱和电流 Isat (A)		温升电流 Irms (A)	
	Nom.	Tol.	Max.	Typ.	Max.	Typ.	Max.	Typ.
HMH0530-2R2MT2W0	2.2	±20%	35.0	29.1	7.7	9.0	4.7	5.5
HMH0530-3R3MT2W0	3.3	±20%	38.0	31.6	6.8	8.0	4.2	5.0
HMH0530-4R7MT2W0	4.7	±20%	53.0	44.1	5.1	6.0	3.9	4.6
HMH0530-5R6MT2W0	5.6	±20%	63.0	52.5	3.8	4.5	3.6	4.25
HMH0530-6R8MT2W0	6.8	±20%	76.2	63.5	3.6	4.3	3.4	4.0
HMH0530-100MT2W0	10.0	±20%	128.0	106.6	3.0	3.5	2.3	2.75
HMH0530-150MT2W0	15.0	±20%	190.0	158.3	2.2	2.6	1.8	2.1
HMH0530-220MT2W0	22.0	±20%	250.0	208.3	1.4	1.7	1.6	1.9

额定工作电压：DC 50V

Rated working voltage: DC 50V

HMH0618-2W0 Series

型号 Part No.	电感量 Ls(μH)		直流电阻 RDC (mΩ)		饱和电流 Isat (A)		温升电流 Irms (A)	
	Nom.	Tol.	Max.	Typ.	Max.	Typ.	Max.	Typ.
HMH0618-R22MT2W0	0.22	±20%	3.0	2.5	22.2	26.0	13.7	16.0
HMH0618-R33MT2W0	0.33	±20%	5.8	4.8	18.8	22.0	12.0	14.0
HMH0618-R47MT2W0	0.47	±20%	7.4	7.1	15.4	18.0	10.2	12.0
HMH0618-R68MT2W0	0.68	±20%	11.0	9.1	14.5	17.0	8.5	10.0
HMH0618-R82MT2W0	0.82	±20%	14.0	11.6	13.2	15.5	7.2	8.5
HMH0618-1R0MT2W0	1.0	±20%	17.0	14.1	12.0	14.0	6.0	7.0
HMH0618-1R5MT2W0	1.5	±20%	25.2	21.0	11.1	13.0	5.1	6.0
HMH0618-2R2MT2W0	2.2	±20%	35.0	29.1	9.4	11.0	5.1	6.0
HMH0618-3R3MT2W0	3.3	±20%	46.0	38.3	7.7	9.0	4.2	5.0
HMH0618-4R7MT2W0	4.7	±20%	76.0	63.3	6.0	7.0	3.4	4.0
HMH0618-6R8MT2W0	6.8	±20%	104.0	86.6	4.7	5.5	2.5	3.0
HMH0618-100MT2W0	10.0	±20%	160.0	133.3	3.0	3.5	1.9	2.3

额定工作电压：DC 50V

Rated working voltage: DC 50V

HMH0624-2W0 Series

型号 Part No.	电感量 Ls(μH)		直流电阻 RDC (mΩ)		饱和电流 Isat (A)		温升电流 Irms (A)	
	Nom.	Tol.	Max.	Typ.	Max.	Typ.	Max.	Typ.
HMH0624-R15MT2W0	0.15	±20%	2.3	1.9	38.5	45.0	25.7	30.0
HMH0624-R22MT2W0	0.22	±20%	3.2	2.6	29.1	34.0	18.0	21.0
HMH0624-R33MT2W0	0.33	±20%	4.4	3.6	25.7	30.0	15.4	18.0
HMH0624-R47MT2W0	0.47	±20%	5.1	4.2	22.2	26.0	12.8	15.0
HMH0624-R68MT2W0	0.68	±20%	7.2	6.0	18.0	21.0	11.1	13.0
HMH0624-R82MT2W0	0.82	±20%	9.5	7.9	14.5	17.0	9.4	11.0
HMH0624-1R0MT2W0	1.0	±20%	13.5	11.2	13.7	16.0	8.5	10.0

型号 Part No.	电感量 Ls(μH)		直流电阻 RDC (mΩ)		饱和电流 Isat (A)		温升电流 Irms (A)	
	Nom.	Tol.	Max.	Typ.	Max.	Typ.	Max.	Typ.
HMH0624-1R5MT2W0	1.5	±20%	20.0	16.6	12.8	15.0	7.7	9.0
HMH0624-2R2MT2W0	2.2	±20%	28.0	23.3	12.0	14.0	6.0	7.0
HMH0624-3R3MT2W0	3.3	±20%	39.0	32.5	8.5	10.0	5.1	6.0
HMH0624-4R7MT2W0	4.7	±20%	50.0	41.6	7.7	9.0	4.7	5.5
HMH0624-6R8MT2W0	6.8	±20%	72.0	60.0	6.0	7.0	3.4	4.0
HMH0624-100MT2W0	10.0	±20%	101.0	84.1	4.2	5.0	2.7	3.2

额定工作电压: DC 50V

Rated working voltage: DC 50V

HMH0630-2W0 Series

型号 Part No.	电感量 Ls(μH)		直流电阻 RDC (mΩ)		饱和电流 Isat (A)		温升电流 Irms (A)	
	Nom.	Tol.	Max.	Typ.	Max.	Typ.	Max.	Typ.
HMH0630-R10MT2W0	0.10	±20%	1.7	1.4	51.4	60.0	27.8	32.5
HMH0630-R15MT2W0	0.15	±20%	1.9	1.5	38.5	45.0	23.1	27.0
HMH0630-R22MT2W0	0.22	±20%	2.8	2.3	34.2	40.0	19.7	23.0
HMH0630-R33MT2W0	0.33	±20%	3.9	3.2	27.4	32.0	17.1	20.0
HMH0630-R47MT2W0	0.47	±20%	4.2	3.5	22.2	26.0	5.0	17.5
HMH0630-R56MT2W0	0.56	±20%	5.0	4.1	21.8	25.5	14.1	16.5
HMH0630-R68MT2W0	0.68	±20%	5.5	4.5	21.4	25.0	13.2	15.5
HMH0630-R82MT2W0	0.82	±20%	8.0	6.6	20.5	24.0	11.1	13.0
HMH0630-1R0MT2W0	1.0	±20%	10.0	8.3	18.8	22.0	9.4	11.0
HMH0630-1R5MT2W0	1.5	±20%	15.0	12.5	15.4	18.0	7.7	9.0
HMH0630-2R2MT2W0	2.2	±20%	20.0	16.6	12.0	14.0	6.8	8.0
HMH0630-3R3MT2W0	3.3	±20%	30.0	25.0	11.5	13.5	5.1	6.0
HMH0630-4R7MT2W0	4.7	±20%	40.0	33.3	8.5	10.0	4.7	5.5
HMH0630-5R6MT2W0	5.6	±20%	48.0	40.0	7.7	9.0	4.2	5.0
HMH0630-6R8MT2W0	6.8	±20%	60.0	50.0	6.8	8.0	3.4	4.5
HMH0630-8R2MT2W0	8.2	±20%	68.0	56.6	6.4	7.5	3.4	4.0
HMH0630-100MT2W0	10.0	±20%	85.0	70.8	5.1	6.0	3.0	3.5
HMH0630-150MT2W0	15.0	±20%	123.0	102.5	3.4	4.0	2.5	3.0
HMH0630-220MT2W0	22.0	±20%	190.0	158.0	3.0	3.5	1.7	2.0
HMH0630-330MT2W0	33.0	±20%	240.0	200.0	2.1	2.5	1.7	2.0

额定工作电压: DC 50V

Rated working voltage: DC 50V

HMH0650-2W0 Series

型号 Part No.	电感量 Ls(μH)		直流电阻 RDC (mΩ)		饱和电流 Isat (A)		温升电流 Irms (A)	
	Nom.	Tol.	Max.	Typ.	Max.	Typ.	Max.	Typ.
HMH0650-R22MT2W0	0.22	±20%	1.9	1.5	30.0	35.0	21.4	25.0
HMH0650-R33MT2W0	0.33	±20%	3.0	2.5	27.4	32.0	21.4	25.0
HMH0650-R47MT2W0	0.47	±20%	3.9	3.2	25.7	30.0	18.8	22.0
HMH0650-R68MT2W0	0.68	±20%	4.5	3.7	20.5	24.0	15.4	18.0
HMH0650-R82MT2W0	0.82	±20%	4.9	4.0	18.8	22.0	14.1	16.5
HMH0650-1R0MT2W0	1.0	±20%	6.5	5.4	17.1	20.0	12.8	15.0
HMH0650-1R2MT2W0	1.2	±20%	7.5	6.2	15.4	18.0	12.0	14.0
HMH0650-1R5MT2W0	1.5	±20%	9.0	7.5	14.1	16.5	10.2	12.0
HMH0650-2R2MT2W0	2.2	±20%	12.0	10.0	12.0	14.0	8.5	10.0
HMH0650-3R3MT2W0	3.3	±20%	20.9	17.4	10.2	12.0	6.8	8.0
HMH0650-4R7MT2W0	4.7	±20%	30.8	25.6	8.5	10.0	5.5	6.5
HMH0650-5R6MT2W0	5.6	±20%	48.0	40.0	7.7	9.0	5.1	6.0
HMH0650-6R8MT2W0	6.8	±20%	51.5	42.9	7.2	8.5	4.7	5.5
HMH0650-8R2MT2W0	8.2	±20%	63.0	52.5	6.8	8.0	4.2	5.0
HMH0650-100MT2W0	10.0	±20%	68.0	56.6	6.4	7.5	3.4	4.0
HMH0650-150MT2W0	15.0	±20%	92.0	76.6	5.1	6.0	3.0	3.5
HMH0650-220MT2W0	22.0	±20%	170.0	141.6	4.7	5.5	2.1	2.5
HMH0650-330MT2W0	33.0	±20%	200.0	166.6	3.0	3.5	1.7	2.0

额定工作电压: DC 50V

Rated working voltage: DC 50V

HMH1030-2W0 Series

型号 Part No.	电感量 Ls(μH)		直流电阻 RDC (mΩ)		饱和电流 Isat (A)		温升电流 Irms (A)	
	Nom.	Tol.	Max.	Typ.	Max.	Typ.	Max.	Typ.
HMH1030-1R0MT2W0	1.0	±20%	6.0	5.0	17.1	20.0	12.8	15.0
HMH1030-3R3MT2W0	3.3	±20%	16.0	13.3	11.5	13.5	7.7	9.0
HMH1030-4R7MT2W0	4.7	±20%	22.5	18.7	11.1	13.0	6.0	7.0
HMH1030-100MT2W0	10.0	±20%	55.0	45.8	6.8	8.0	4.2	5.0

额定工作电压: DC 50V

Rated working voltage: DC 50V

HMH1040-2W0 Series

型号 Part No.	电感量 Ls(μH)		直流电阻 RDC (mΩ)		饱和电流 Isat (A)		温升电流 Irms (A)	
	Nom.	Tol.	Max.	Typ.	Max.	Typ.	Max.	Typ.
HMH1040-R15MT2W0	0.15	±20%	0.65	0.54	77.1	90.0	41.1	48.0
HMH1040-R22MT2W0	0.22	±20%	1.0	0.8	51.4	60.0	30.0	35.0
HMH1040-R33MT2W0	0.33	±20%	1.2	1.0	51.4	60.0	26.5	31.0

型号 Part No.	电感量 Ls(μH)		直流电阻 RDC (mΩ)		饱和电流 Isat (A)		温升电流 Irms (A)	
	Nom.	Tol.	Max.	Typ.	Max.	Typ.	Max.	Typ.
HMH1040-R36MT2W0	0.36	±20%	1.2	1.0	51.4	60.0	26.5	31.0
HMH1040-R45MT2W0	0.45	±20%	1.5	1.3	38.5	45.0	24.8	29.0
HMH1040-R47MT2W0	0.47	±20%	1.5	1.3	36.8	43.0	24.0	28.0
HMH1040-R56MT2W0	0.56	±20%	1.8	1.5	34.2	40.0	21.4	25.0
HMH1040-R68MT2W0	0.68	±20%	2.7	2.3	33.4	39.0	18.8	22.0
HMH1040-1R0MT2W0	1.0	±20%	3.3	2.7	30.8	36.0	15.4	18.0
HMH1040-1R5MT2W0	1.5	±20%	4.6	3.8	28.2	33.0	13.7	16.0
HMH1040-2R2MT2W0	2.2	±20%	7.0	5.8	23.1	27.0	10.2	12.0
HMH1040-3R3MT2W0	3.3	±20%	11.8	9.8	17.1	20.0	9.4	11.0
HMH1040-4R7MT2W0	4.7	±20%	15.5	12.9	14.5	17.0	8.5	10.0
HMH1040-5R6MT2W0	5.6	±20%	19.3	16.0	12.0	14.0	7.7	9.0
HMH1040-6R8MT2W0	6.8	±20%	23.3	19.4	11.5	13.5	7.2	8.5
HMH1040-100MT2W0	10.0	±20%	30.0	25.0	10.2	12.0	6.4	7.5
HMH1040-150MT2W0	15.0	±20%	45.0	37.5	8.5	10.0	5.3	6.25
HMH1040-220MT2W0	22.0	±20%	74.0	61.6	6.0	7.0	4.2	5.0
HMH1040-330MT2W0	33.0	±20%	112.0	93.3	4.2	5.0	3.0	3.5
HMH1040-470MT2W0	47.0	±20%	167.0	139.1	3.8	4.5	2.5	3.0
HMH1040-680MT2W0	68.0	±20%	240.0	200.0	2.5	3.0	1.7	2.0

额定工作电压：DC 50V

Rated working voltage: DC 50V

HMH1235-2W0 Series

型号 Part No.	电感量 Ls(μH)		直流电阻 RDC (mΩ)		饱和电流 Isat (A)		温升电流 Irms (A)	
	Nom.	Tol.	Max.	Typ.	Max.	Typ.	Max.	Typ.
HMH1235-R47MT2W0	0.47	±20%	2.0	1.6	47.1	55.0	27.4	32.0
HMH1235-R68MT2W0	0.68	±20%	2.7	2.3	42.0	49.0	24.0	28.0
HMH1235-R82MT2W0	0.82	±20%	3.0	2.5	37.7	44.0	21.4	25.0
HMH1235-1R0MT2W0	1.0	±20%	3.3	2.7	34.2	40.0	20.5	24.0
HMH1235-1R5MT2W0	1.5	±20%	5.5	4.5	30.0	35.0	16.2	19.0
HMH1235-2R2MT2W0	2.2	±20%	8.0	6.6	24.8	29.0	13.7	16.0
HMH1235-3R3MT2W0	3.3	±20%	11.8	9.8	23.1	27.0	10.2	12.0
HMH1235-4R7MT2W0	4.7	±20%	18.0	15.0	18.8	22.0	8.5	10.0
HMH1235-5R6MT2W0	5.6	±20%	22.0	18.3	16.2	19.0	8.1	9.5
HMH1235-6R8MT2W0	6.8	±20%	24.0	20.0	15.4	18.0	7.7	9.0
HMH1235-8R2MT2W0	8.2	±20%	28.0	23.3	13.7	16.0	7.2	8.5
HMH1235-100MT2W0	10.0	±20%	34.0	28.3	12.0	14.0	6.4	7.5
HMH1235-150MT2W0	15.0	±20%	65.0	54.1	8.5	10.0	5.5	6.5
HMH1235-220MT2W0	22.0	±20%	99.0	82.5	6.0	7.0	3.8	4.5
HMH1235-330MT2W0	33.0	±20%	160.0	133.3	5.1	6.0	3.0	3.5

型号 Part No.	电感量 Ls(μH)		直流电阻 RDC (mΩ)		饱和电流 Isat (A)		温升电流 Irms (A)	
	Nom.	Tol.	Max.	Typ.	Max.	Typ.	Max.	Typ.
HMH1235-470MT2W0	47.0	±20%	218.0	181.6	4.7	5.5	2.5	3.0

额定工作电压：DC 50V

Rated working voltage: DC 50V

HMH1250-2W0 Series

型号 Part No.	电感量 Ls(μH)		直流电阻 RDC (mΩ)		饱和电流 Isat (A)		温升电流 Irms (A)	
	Nom.	Tol.	Max.	Typ.	Max.	Typ.	Max.	Typ.
HMH1250-R33MT2W0	0.33	±20%	0.9	0.75	68.5	80.0	36.0	42.0
HMH1250-R47MT2W0	0.47	±20%	1.1	0.9	55.7	65.0	32.5	38.0
HMH1250-R56MT2W0	0.56	±20%	1.5	1.2	47.1	55.0	30.8	36.0
HMH1250-R68MT2W0	0.68	±20%	1.7	1.4	46.2	54.0	29.1	34.0
HMH1250-R82MT2W0	0.82	±20%	2.1	1.7	44.5	52.0	26.5	31.0
HMH1250-1R0MT2W0	1.0	±20%	2.5	2.0	42.8	50.0	24.8	29.0
HMH1250-1R5MT2W0	1.5	±20%	3.3	2.7	41.1	48.0	23.1	27.0
HMH1250-2R2MT2W0	2.2	±20%	5.5	4.5	27.4	32.0	17.1	20.0
HMH1250-3R3MT2W0	3.3	±20%	9.2	7.6	27.4	32.0	12.8	15.0
HMH1250-4R7MT2W0	4.7	±20%	15.0	12.5	23.1	27.0	10.2	12.0
HMH1250-5R6MT2W0	5.6	±20%	16.5	13.7	18.8	22.0	9.8	11.5
HMH1250-6R8MT2W0	6.8	±20%	18.5	15.4	18.0	21.0	9.4	11.0
HMH1250-8R2MT2W0	8.2	±20%	22.5	18.7	15.4	18.0	8.1	9.5
HMH1250-100MT2W0	10.0	±20%	25.5	21.2	13.7	16.0	7.7	9.0
HMH1250-150MT2W0	15.0	±20%	38.0	31.6	11.1	13.0	7.0	8.2
HMH1250-220MT2W0	22.0	±20%	58.0	48.3	8.5	10.0	5.5	6.5
HMH1250-330MT2W0	33.0	±20%	88.0	73.3	6.8	8.0	4.2	5.0

额定工作电压：DC 50V

Rated working voltage: DC 50V

HMH1260-2W0 Series

型号 Part No.	电感量 Ls(μH)		直流电阻 RDC (mΩ)		饱和电流 Isat (A)		温升电流 Irms (A)	
	Nom.	Tol.	Max.	Typ.	Max.	Typ.	Max.	Typ.
HMH1260-R47MT2W0	0.47	±20%	1.3	1.08	51.4	60.0	32.5	38.0
HMH1260-R68MT2W0	0.68	±20%	1.7	1.4	46.2	54.0	29.1	34.0
HMH1260-1R0MT2W0	1.0	±20%	2.5	2.0	38.5	45.0	24.8	29.0
HMH1260-1R5MT2W0	1.5	±20%	3.3	2.7	36.8	43.0	23.1	27.0
HMH1260-2R2MT2W0	2.2	±20%	4.7	3.9	29.1	34.0	17.1	20.0
HMH1260-3R3MT2W0	3.3	±20%	7.1	5.9	24.0	28.0	14.5	17.0
HMH1260-4R7MT2W0	4.7	±20%	11.5	9.5	21.4	25.0	13.7	16.0
HMH1260-6R8MT2W0	6.8	±20%	13.8	11.5	16.2	19.0	12.8	15.0
HMH1260-8R2MT2W0	8.2	±20%	16.0	13.3	15.4	18.0	9.4	11.0

型号 Part No.	电感量 Ls(μH)		直流电阻 RDC (mΩ)		饱和电流 Isat (A)		温升电流 Irms (A)	
	Nom.	Tol.	Max.	Typ.	Max.	Typ.	Max.	Typ.
HMH1260-100MT2W0	10.0	±20%	20.7	17.2	13.7	16.0	9.4	11.0
HMH1260-150MT2W0	15.0	±20%	29.0	24.1	11.1	13.0	7.7	9.0
HMH1260-220MT2W0	22.0	±20%	39.5	32.9	9.4	11.0	6.8	8.0
HMH1260-330MT2W0	33.0	±20%	75.0	62.5	6.8	8.0	5.1	6.0
HMH1260-470MT2W0	47.0	±20%	90.0	75.0	6.0	7.0	4.7	5.5
HMH1260-680MT2W0	68.0	±20%	140.0	116.6	5.1	6.0	4.2	5.0
HMH1260-820MT2W0	82.0	±20%	161.0	134.1	4.7	5.5	3.8	4.5
HMH1260-101MT2W0	100	±20%	200.0	166.6	4.2	5.0	3.4	4.0
HMH1260-121MT2W0	120	±20%	235.0	195.8	3.8	4.5	3.0	3.5
HMH1260-151MT2W0	150	±20%	350.0	291.6	3.4	4.0	2.5	3.0

额定工作电压：DC 50V

Rated working voltage: DC 50V

HMH1265-2W0 Series

型号 Part No.	电感量 Ls(μH)		直流电阻 RDC (mΩ)		饱和电流 Isat (A)		温升电流 Irms (A)	
	Nom.	Tol.	Max.	Typ.	Max.	Typ.	Max.	Typ.
HMH1265-R47MT2W0	0.47	±20%	1.3	1.08	54.0	63.0	35.1	41.0
HMH1265-R68MT2W0	0.68	±20%	1.7	1.4	46.2	54.0	29.1	34.0
HMH1265-1R0MT2W0	1.0	±20%	2.5	2.0	41.1	48.0	24.8	29.0
HMH1265-1R5MT2W0	1.5	±20%	3.0	2.5	38.5	45.0	23.1	27.0
HMH1265-2R2MT2W0	2.2	±20%	4.2	3.5	31.7	37.0	18.8	22.0
HMH1265-3R3MT2W0	3.3	±20%	7.1	5.9	25.7	30.0	14.5	17.0
HMH1265-4R7MT2W0	4.7	±20%	8.4	7.0	24.0	28.0	11.5	13.5
HMH1265-6R8MT2W0	6.8	±20%	11.5	9.5	15.4	18.0	9.4	11.0
HMH1265-8R2MT2W0	8.2	±20%	15.5	12.9	13.7	16.0	9.0	10.5
HMH1265-100MT2W0	10.0	±20%	16.0	13.3	13.2	15.5	8.5	10.0
HMH1265-150MT2W0	15.0	±20%	29.0	24.1	11.1	13.0	7.7	9.0
HMH1265-220MT2W0	22.0	±20%	37.0	24.1	10.2	12.0	7.7	9.0
HMH1265-330MT2W0	33.0	±20%	58.0	48.3	9.4	11.0	6.8	8.0
HMH1265-470MT2W0	47.0	±20%	90.0	75.0	8.1	9.5	5.5	6.5
HMH1265-680MT2W0	68.0	±20%	130.0	108.0	6.6	7.8	4.2	5.0

额定工作电压：DC 50V

Rated working voltage: DC 50V

HMH1770-2W0 Series

型号 Part No.	电感量 Ls(μH)		直流电阻 RDC (mΩ)		饱和电流 Isat (A)		温升电流 Irms (A)	
	Nom.	Tol.	Max.	Typ.	Max.	Typ.	Max.	Typ.
HMH1770-1R0MT2W0	1.0	±20%	2.0	1.6	51.4	60.0	44.5	52.0
HMH1770-1R5MT2W0	1.5	±20%	2.5	2.0	44.5	52.0	40.2	47.0
HMH1770-2R2MT2W0	2.2	±20%	2.7	2.2	40.2	47.0	37.2	43.5
HMH1770-3R3MT2W0	3.3	±20%	3.9	3.2	38.5	45.0	24.0	28.0
HMH1770-4R7MT2W0	4.7	±20%	5.5	4.5	35.1	41.0	21.4	25.0
HMH1770-5R6MT2W0	5.6	±20%	7.05	5.8	34.2	40.0	18.0	21.0
HMH1770-6R8MT2W0	6.8	±20%	9.2	7.6	27.4	32.0	16.2	19.0
HMH1770-8R2MT2W0	8.2	±20%	10.8	9.0	25.0	25.0	15.4	18.0
HMH1770-100MT2W0	10.0	±20%	13.0	10.8	20.5	24.0	14.1	16.5
HMH1770-150MT2W0	15.0	±20%	20.5	17.0	19.7	23.0	10.7	12.5
HMH1770-220MT2W0	22.0	±20%	26.5	22.0	15.4	18.0	10.2	12.0
HMH1770-330MT2W0	33.0	±20%	44.0	36.6	12.8	15.0	9.1	10.7
HMH1770-390MT2W0	39.0	±20%	48.0	40.0	9.4	11.0	7.8	9.2
HMH1770-470MT2W0	47.0	±20%	55.0	45.8	8.1	9.5	7.4	8.7
HMH1770-560MT2W0	56.0	±20%	62.0	51.6	7.7	9.0	6.6	7.8
HMH1770-680MT2W0	68.0	±20%	80.0	66.6	6.8	8.0	6.0	7.0
HMH1770-101MT2W0	100.0	±20%	118.0	98.3	5.5	6.5	4.5	5.3

额定工作电压：DC 50V

Rated working voltage: DC 50V

◆可靠性测试方法
Reliability Test Method

序号 No.	项目 Items	要求 Requirements	试验方法及备注 Test Methods and Remarks
1	高温存储 High Temperature Exposure (Storage)	无可见损伤; ΔL/L 在±10%以内 No visible damage. ΔL/L within ±10%.	温度: 125℃; 不通电; 持续时间: 1000 h; 试验结束后 24±4h 内进行电性能测量。 Temperature :125℃; Unpowered; Duration :1000 h; Measurement at (24±4) hours after test conclusion.

序号 No.	项目 Items	要求 Requirements	试验方法及备注 Test Methods and Remarks
2	低温存储 Low Temperature Storage	无可见损伤; $\Delta L/L$ 在 $\pm 10\%$ 以内 No visible damage. $\Delta L/L$ within $\pm 10\%$.	温度: $-55 \pm 2^\circ\text{C}$; 时间: 1000 h; 试验结束后 24 \pm 4h 内进行测试。 Temperature: $-55 \pm 2^\circ\text{C}$; Time: 1000 h; Measurement at (24 \pm 4) hours after test conclusion.
3	温度冲击 Thermal Shock	无可见损伤; $\Delta L/L$ 在 $\pm 10\%$ 以内 No visible damage. $\Delta L/L$ within $\pm 10\%$.	重复 100 次循环如下: ($-55 \pm 2^\circ\text{C}$, 30 \pm 3 分钟) \rightarrow (室温, 5 分钟) \rightarrow ($+125 \pm 2^\circ\text{C}$, 30 \pm 3 分钟) \rightarrow (室温, 5 分钟)。 恢复: 在标准条件下恢复 48 \pm 4 h 后进行测试。 Repeat 100 cycle as follow: ($-55 \pm 2^\circ\text{C}$, 30+3minutes) \rightarrow (Room temperature, 5 minutes) \rightarrow ($+125 \pm 2^\circ\text{C}$, 30 \pm 3minutes) \rightarrow (Room temperature, 5 minutes). Recovery :48 +4/-0 hours of recovery under the standard condition after the test.
4	工作寿命 working life	无可见损伤; $\Delta L/L$ 在 $\pm 10\%$ 以内 No visible damage. $\Delta L/L$ within $\pm 10\%$.	温度: $85 \pm 2^\circ\text{C}$; 持续时间: 1000 \pm 4 h, 额定电流。 试验结束后 24 \pm 4 h 内进行测试。 Temperature: $85 \pm 2^\circ\text{C}$; Duration: 1000 \pm 4h, at rated current. Test within 24 \pm 4h after the test.
5	耐湿性 Humidity resistance	无可见损伤; $\Delta L/L$ 在 $\pm 10\%$ 以内 No visible damage. $\Delta L/L$ within $\pm 10\%$.	温度: $60 \pm 2^\circ\text{C}$; 湿度: 90-95% 持续时间: 1000 \pm 4 h。 Temperature: $60 \pm 2^\circ\text{C}$; Humidity :90-95%; Duration :1000 \pm 4 h;
6	机械冲击 Mechanical Shock	无可见损伤; $\Delta L/L$ 在 $\pm 10\%$ 以内 No visible damage. $\Delta L/L$ within $\pm 10\%$.	峰值加速度 100 G; 脉冲持续时间 11ms; 每个相互垂直的方向 (X、Y、Z) 各 3 次, 每个方向的正负方向各 3 次。 Peak value 100 G; Normal duration 11 ms; 3 times in each positive and negative direction of 3 mutual perpendicular directons.

序号 No.	项目 Items	要求 Requirements	试验方法及备注 Test Methods and Remarks
7	振动 Vibration	无可见损伤; $\Delta L/L$ 在 $\pm 10\%$ 以内 No visible damage. $\Delta L/L$ within $\pm 10\%$.	振动频率: (10Hz 到 55Hz 到 10Hz) 在 60 秒内完成一个周期。 振动时间: 每个相互垂直的方向振动 2 小时, 每个方向的正负方向各 3 次; 振幅: 1.5mm (最大)。 Vibration frequency: (10Hz to 55Hz to 10Hz) complete a cycle in 60 seconds. Vibration time: vibrate for 2 hours in each of the three mutually perpendicular directions, with 3 cycles in each positive and negative direction; Amplitude: 1.5mm (max).
8	可焊性 Solderability	无可见损伤; 电极面 95%以上覆盖新的焊料。 95% or more of electrode area shall be coated by new solder.	8 小时蒸汽老化测试。 焊槽法: 无铅焊锡; 温度 $(245 \pm 5) ^\circ\text{C}$; 浸渍时间 $(5 \pm 0.5) \text{ s}$ 。 8 Hours steam age test. Solder bath: Lead-free solder; Temperature $(245 \pm 5) ^\circ\text{C}$; Immersion timer $(5 \pm 0.5) \text{ seconds}$.

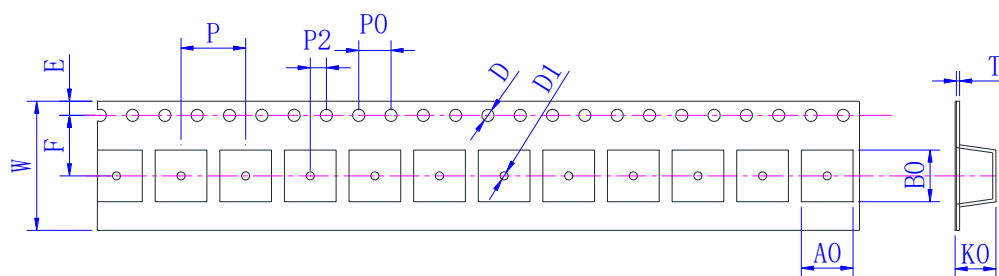
◆包装

Packaging

* 载带尺寸

Tape Dimension

(单位: 毫米 Unit:mm)

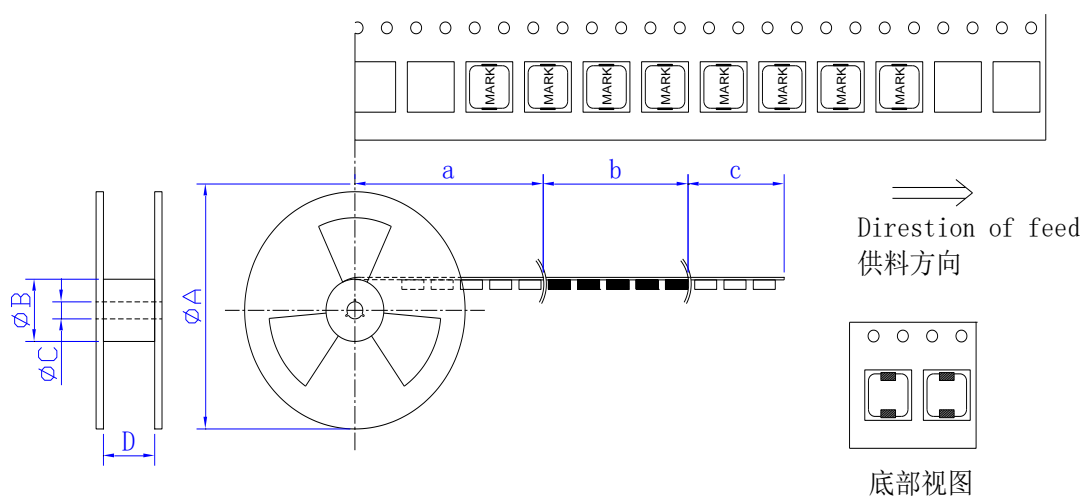


Series	W	A0	B0	D	D1	E	F	K0	P0	P2	P	T
0320	12±0.5	3.8±0.3	3.6±0.3	1.5±0.3	-	1.75±0.3	5.5±0.3	3.0±0.1	4.0±0.3	2.0±0.3	16.0±0.3	0.35±0.1
0420	12±0.5	4.85±0.3	5.2±0.3	1.5±0.3	-	1.75±0.3	5.5±0.3	2.3±0.3	4.0±0.3	2.0±0.3	8.0±0.3	0.35±0.1
0520	12±0.5	6.1±0.3	5.5±0.3	1.5±0.3	-	1.75±0.3	5.5±0.3	3.0±0.1	4.0±0.3	2.0±0.3	8.0±0.3	0.35±0.1
0530	12±0.5	5.85±0.3	5.5±0.3	1.5±0.3	-	1.75±0.3	5.5±0.3	3.3±0.3	4.0±0.3	2.0±0.3	8.0±0.3	0.35±0.1
0618	16±0.5	7.7±0.3	7.0±0.3	1.5±0.3	-	1.75±0.3	7.5±0.3	1.8±0.3	4.0±0.3	2.0±0.3	8.0±0.3	0.35±0.1
0624	16±0.5	7.7±0.3	7.0±0.3	1.5±0.3	-	1.75±0.3	7.5±0.3	2.4±0.3	4.0±0.3	2.0±0.3	12.0±0.3	0.35±0.1
0630	16±0.5	7.7±0.3	7.0±0.3	1.5±0.3	-	1.75±0.3	7.5±0.3	3.3±0.3	4.0±0.3	2.0±0.3	12.0±0.3	0.35±0.1
0650	16±0.5	7.4±0.3	6.9±0.3	1.5±0.3	-	1.75±0.3	7.5±0.3	5.3±0.3	4.0±0.3	2.0±0.3	8.0±0.3	0.35±0.1
0840	24±0.5	8.8±0.3	9.0±0.3	1.5±0.3	-	1.75±0.3	11.5±0.3	4.6±0.3	4.0±0.3	2.0±0.3	16.0±0.3	0.35±0.1
1030	24±0.5	11.6±0.3	10.4±0.3	1.5±0.3	-	1.75±0.3	11.5±0.3	3.3±0.3	4.0±0.3	2.0±0.3	16.0±0.3	0.35±0.1
1040	24±0.5	11.6±0.3	10.4±0.3	1.5±0.3	-	1.75±0.3	11.5±0.3	4.3±0.3	4.0±0.3	2.0±0.3	16.0±0.3	0.35±0.1
1050	24±0.5	11.6±0.3	10.4±0.3	1.5±0.3	-	1.75±0.3	11.5±0.3	5.3±0.3	4.0±0.3	2.0±0.3	16.0±0.3	0.35±0.1
1235	24±0.5	14.1±0.3	13.0±0.3	1.5±0.3	-	1.75±0.3	11.5±0.3	3.8±0.3	4.0±0.3	2.0±0.3	16.0±0.3	0.5±0.1
1250	24±0.5	13.9±0.3	13.0±0.3	1.5±0.3	-	1.75±0.3	11.5±0.3	5.3±0.3	4.0±0.3	2.0±0.3	16.0±0.3	0.50±0.1
1260	24±0.5	14.1±0.3	13.0±0.3	1.5±0.3	-	1.75±0.3	11.5±0.3	6.0±0.3	4.0±0.3	2.0±0.3	16.0±0.3	0.5±0.1
1265	24±0.5	14.1±0.3	13.0±0.3	1.5±0.3	-	1.75±0.3	11.5±0.3	6.8±0.3	4.0±0.3	2.0±0.3	16.0±0.3	0.5±0.1
1770	24±0.5	18.1±0.3	17.4±0.3	1.5±0.3	-	1.75±0.3	11.5±0.3	7.3±0.3	4.0±0.3	2.0±0.3	16.0±0.3	0.5±0.1

*卷盘尺寸

Reel Dimensions

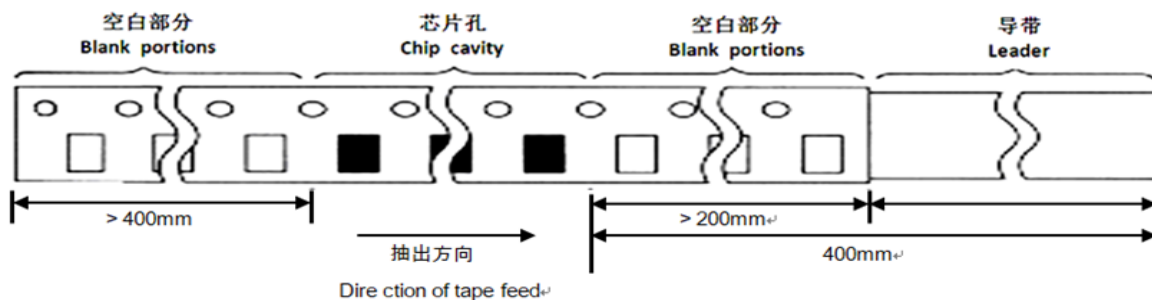
(单位: 毫米 Unit:mm)



型号 Size	A	B	C	D	a	b	c
0320	330	100	13	12.4	空带	装元件	引带
	Typical	Typical	Typical	Typical	Blank portions	Chip cavity	Leader
0420	330	100	13	12.4	空带	装元件	引带
	Typical	Typical	Typical	Typical	Blank portions	Chip cavity	Leader
0520	330	100	13	12.4	空带	装元件	引带
	Typical	Typical	Typical	Typical	Blank portions	Chip cavity	Leader
0530	330	100	13	12.4	空带	装元件	引带
	Typical	Typical	Typical	Typical	Blank portions	Chip cavity	Leader
0618	330	100	13	16.4	空带	装元件	引带
	Typical	Typical	Typical	Typical	Blank portions	Chip cavity	Leader
0624	330	100	13	16.4	空带	装元件	引带
	Typical	Typical	Typical	Typical	Blank portions	Chip cavity	Leader
0630	330	100	13	16.4	空带	装元件	引带
	Typical	Typical	Typical	Typical	Blank portions	Chip cavity	Leader
0650	330	100	13	16.4	空带	装元件	引带
	Typical	Typical	Typical	Typical	Blank portions	Chip cavity	Leader
0840	330	97	13.0	24.4	空带	装元件	引带
	Typical	Typical	Typical	Typical	Blank portions	Chip cavity	Leader
1030	330	100	13	24.4	空带	装元件	引带
	Typical	Typical	Typical	Typical	Blank portions	Chip cavity	Leader
1040	330	100	13	24.4	空带	装元件	引带
	Typical	Typical	Typical	Typical	Blank portions	Chip cavity	Leader
1050	330	100	13	24.4	空带	装元件	引带
	Typical	Typical	Typical	Typical	Blank portions	Chip cavity	Leader
1235	330	100	13	24.4	空带	装元件	引带
	Typical	Typical	Typical	Typical	Blank portions	Chip cavity	Leader
1250	330	100	13	24.4	空带	装元件	引带
	Typical	Typical	Typical	Typical	Blank portions	Chip cavity	Leader
1260	330	100	13	24.4	空带	装元件	引带
	Typical	Typical	Typical	Typical	Blank portions	Chip cavity	Leader
1265	330	100	13	24.4	空带	装元件	引带
	Typical	Typical	Typical	Typical	Blank portions	Chip cavity	Leader
1770	330	100	13	32.4	空带	装元件	引带
	Typical	Typical	Typical	Typical	Blank portions	Chip cavity	Leader

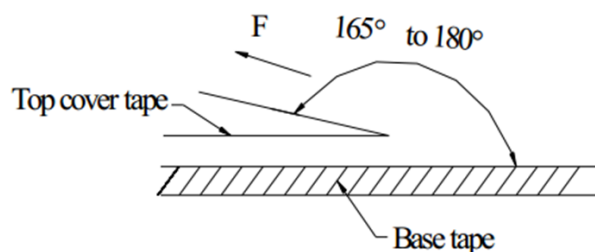
* 导带及空格部分

Leader And Blank Portion



* 剥离力检验

Peeling Off Force



- (1) 盖带的剥离力：沿面胶移动方向拉时要求剥离力为 $0.1\text{N} \sim 1.3\text{N}$ 。

Peeling force should be $0.1\text{N} \sim 1.3\text{N}$ pulling in the direction of arrow.

- (2) 剥离速度： 300mm/min 。

Speed of peeling off: 300mm/min .

- (3) 在载带剥落时，面胶不能有破损，不能粘载带。

When the carrier tape peels off, the surface adhesive should not be damaged and the carrier tape should not be adhered.

型号 Size	每卷数量 Quantity Per Roll	每盒数量 Quantity Per Box	每箱数量 Quantity Per Case
320	3000PCS	15000PCS	45000PCS
420	3000PCS	15000PCS	45000PCS
520	2000PCS	10000PCS	20000PCS
530	2000PCS	10000PCS	20000PCS
618	2000PCS	8000PCS	16000PCS
624	1500PCS	6000PCS	12000PCS
630	1500PCS	4500PCS	18000PCS
650	1500PCS	6000PCS	8000PCS
840	800PCS	2400PCS	4800PCS
1030	800PCS	2400PCS	4800PCS
1040	750PCS	2250PCS	4500PCS
1050	750PCS	2250PCS	4500PCS
1235	500PCS	1500PCS	3000PCS
1250	500PCS	1500PCS	3000PCS
1260	500PCS	1500PCS	3000PCS
1265	500PCS	1500PCS	3000PCS
1770	200PCS	400PCS	800PCS

* 标签粘贴位置

Label stick station

卷盘标签 Reel label	纸盒标签 Carton label	外箱标签 Outer box label
		

◆推荐焊接条件

Recommend Soldering Conditions

* 焊接条件

Soldering Conditions

* 本产品建议使用回流焊接法。

Applicable soldering process to the products is reflow soldering.

* 焊接材料

Welding Material

(1) 焊料: Sn-3.0Ag-0.5Cu

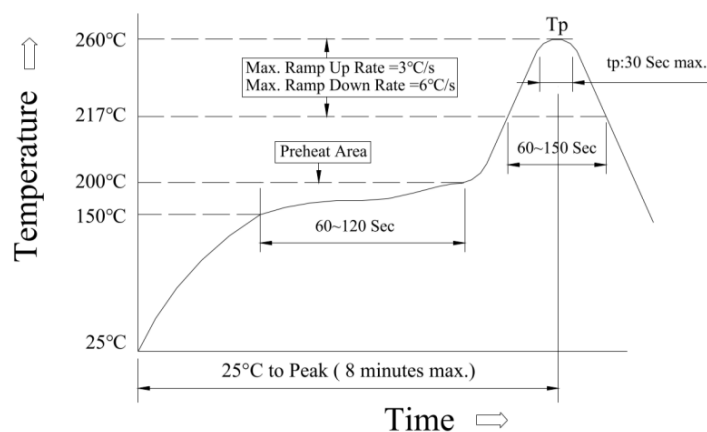
Solder: Sn-3.0Ag-0.5Cu

(2) 助焊剂: 使用松香基助焊剂, 禁止使用卤化物含量超过 0.2wt%的强酸性助焊剂和水溶性助焊剂。

Flux: Use rosin based flux, and prohibit the use of strong acidic flux and water-soluble flux with halide content exceeding 0.2wt%.

* 焊接曲线

Soldering Profile



(1) 回流焊方法:

Reflow Soldering Method :

Reflow Soldering	Tp:255~260℃	Max.30 seconds (tp)
	217℃	60~150 seconds
Pre-Heat	150 ~ 200℃	60~120 seconds
Time 25℃ to peak temperature	8 minutes max.	

(2) 烙铁方法: 350±5℃, 最长 3 秒

Soldering iron Method : 350±5℃ 3 seconds Max.

◆存储要求

Storage Requirements

* 存储期限

Storage Period

距电感公司出厂检验时间 1 年内, 产品可以使用检验时间可以通过包装外侧标记的日期确认。若时间超过 1 年, 应检查焊接性能后方可使用。

Products which inspected inductor company over 1 year ago should be examined and used, which can be Confirmed with inspection No. marked on the container. Solder ability should be checked if this period is exceeded.

* 存储条件

Storage Conditions

(1) 存放货物的库房应满足以下条件: 温度: -10 ~ +40℃, 相对湿度: 30 ~ 70% RH。

Products should be storage in the warehouse on the following conditions: Temperature : -10~+40℃, Humidity: 30~70% RH .

(2) 禁止将产品保管在腐蚀性物质中, 如硫磺、氯气或酸, 否则将引起端头氧化, 导致降低焊接性。

Don't keep products in corrosive gases such as sulfur, chlorine gas or acid , or it may case oxidization of Electrodes resulting in poor solder ability.

(3) 为了避免受潮气、灰尘等物质的影响, 产品应保管于货架上。

Products should be stored on the palette for the prevention of the influence from humidity, dust and so on.

(4) 产品保管在库房中, 应避免热冲击、振动以及直接光照等等。

Products should be stored in the warehouse without heat shock, vibration, direct sunlight and so on.

(5) 产品应密封包装。

Products should be stored under the airtight packaged condition.

◆注意事项

Notes

(1) 本承认书保证我司产品作为一个单体时的质量情况, 当我司产品被安装到贵司产品上时请保证贵司的产品已根据贵司的规范进行了有效评价和确认。

This acknowledgement letter guarantees the quality of our products as a single unit. When our products are installed on your products, please ensure that your products have been effectively evaluated and confirmed according to your specifications.

(2) 如果贵司对我司产品的使用已超过了本测试规范所界定的产品功能, 对于此所引发的失效我司将不予保证。

If your company's use of our products exceeds the product functions defined in this testing specification, we will not guarantee any failure caused by this.

■ 修订履历

Change History

版本	日期	修订内容	修订人
A0	2025-09-04	首次发行 Initial issue	莫健维

注：上述所提供的内容为产品规格说明。在产品未变更时，风华保有修改此内容不另行通知的所有权利，任何产品变更将会以 PCN 变更通知客户。

Note: The above provided content is a product specification description. Fenghua reserves the right to modify this content without prior notice when the product has not been changed. Any product changes will be notified to the customer as a PCN change.